



Downlite™ Series

UL Downlights

americanlite®
We light your world™



DMR™ Series

2"



LM79

LM80

CCT
27K-5K

Lumens
Up to
77 lxw

CRI
>90

36°
Beam Angle

VOLTS
120-277

PF
>0.93

THD
<20%

-20°C~40°C

50,000

5 YEAR
Warranty

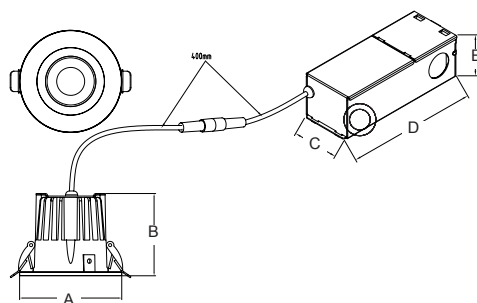
The DMR™ Series is a Round Specification-Grade downlight, with a minimalist 2" aperture that combines optical performance and control for architectural applications.

DMR™ Series is at the pinnacle of where lighting innovation meets design and efficiency. A high-performance serviceable integrated LED with a state-of-the-art light engine delivers incredible maintenance-free optics and performance ideal for high-end residential and commercial applications.

The DMR™ Series Features a unique "canless" design. Computer designed smooth reflector, creates more uniform light with fewer downlights without worrying about glare or distractions. DMR™ Series optic system offers a comfortable, soothing light, achieving uncompromising illumination with a true 36° Beam and CRI>90. The Led power, optical chamber (made of die cast aluminum), and driver compartment work together in harmony to create a thermal management system in a single compact unit. Secure trim retention with two side-mounted spring clips for easy installation in plaster, sheet rock, or plywood ceilings.

DMR™ Series is the ideal specification grade downlighting for remodel or new construction projects. It delivers exceptional visual comfort and optical control, extraordinary mechanical precision, installation efficiency and future proofing. Designed for optimal life and lumen maintenance, DMR™ Series is the perfect balance of visual comfort and quality of light.

Dimensions (mm)



Power	Size	A	B	C	D	E
7w	2"	80	65	48	124	40

Ordering information

Item	Power	Size	CCT	Lumens	Battery Pack Options
AL582442	7w	2"	2700K	500	E1 4w AL585005
AL582443	7w	2"	3000K	510	
AL582444	7w	2"	4000K	525	
AL582445	7w	2"	5000K	540	

Packing information

Model	CBM (Master)	Pieces per master	Box Dimensions (CM)	Gross weight (KGS)
7w	0.0587	24	62.5 x 47 x 20	10

DMS™ Series

2"



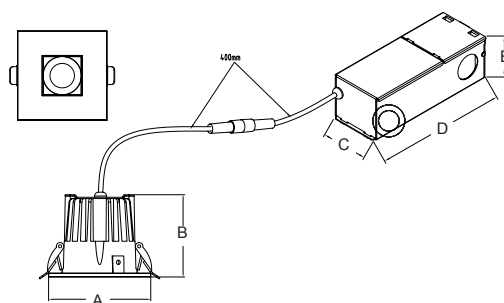
The DMS™ Series is a Square Specification-Grade downlight, with a minimalist 2" aperture that combines optical performance and control for architectural applications.

DMS™ Series is at the pinnacle of where lighting innovation meets design and efficiency. A high-performance serviceable integrated LED with a state-of-the-art light engine delivers incredible maintenance-free optics and performance ideal for high-end residential and commercial applications.

The DMS™ Series Features a unique "canless" design. Computer designed smooth reflector, creates more uniform light with fewer downlights without worrying about glare or distractions. DMS™ Series optic system offers a comfortable, soothing light, achieving uncompromising illumination with a true 36° Beam and CRI>90. The Led power, optical chamber (made of die cast aluminum), and driver compartment work together in harmony to create a thermal management system in a single compact unit. Secure trim retention with two side-mounted spring clips for easy installation in plaster, sheet rock, or plywood ceilings.

DMS™ Series is the ideal specification grade downlighting for remodel or new construction projects. It delivers exceptional visual comfort and optical control, extraordinary mechanical precision, installation efficiency and future proofing. Designed for optimal life and lumen maintenance, DMS™ Series is the perfect balance of visual comfort and quality of light.

Dimensions (mm)



Power	Size	A	B	C	D	E
7w	2"	80	65	48	124	40

Ordering information

Item	Power	Size	CCT	Lumens	Battery Pack Options
AL582446	7w	2"	2700K	430	E1 4w AL585005
AL582447	7w	2"	3000K	440	
AL582448	7w	2"	4000K	450	
AL582449	7w	2"	5000K	460	

Packing information

Model	CBM (Master)	Pieces per master	Box Dimensions (CM)	Gross weight (KGS)
7w	0.0587	24	62.5 x 47 x 20	10

DXP4™ Series

4"



LM79

LM80



CCT
27K-5K

Lumens
Up to
75 lxw



VOLTS
120



THD
<20%



5 YEAR
Warranty

The DXP4™ Series is a Round 4" residential / commercial grade LED recessed downlight with cutting edge DOB led technology that eliminates the need for drivers, resulting in a more stable and powerful fixture, with stunning lifetime up to 50,000 hours, and power factor >90%.

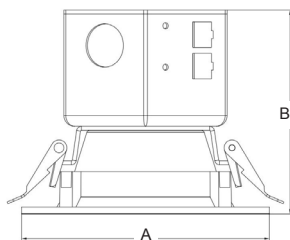
The DXP4™ Series downlights feature a unique "canless" design. These all-in-one LED fixtures include an integrated junction box for direct wiring, require no tools and take less than 1/3 of the time to install versus a conventional fixture with can. Secure trim retention with two side-mounted spring clips for easy installation in plaster, sheet rock, or plywood ceilings.

The DXP4™ Series computer designed baffle reflector, creates more uniform light with fewer downlights without worrying about glare or distractions. DXP4™ Series optic system offers a comfortable, soothing light, achieving uncompromising illumination with a true 102° Beam and CRI>90. The optic chamber, made of heavy-duty PC ensures maximum heat dissipation.

DXP4™ Series features 120v & TRIAC dimming, to add versatility and control. DOB technology, led power, and housing work together in harmony to create a thermal management system in a single compact unit. DXP4™ Series are IC Rated and comply with National Electrical Code (NEC), ETL, Energy Star and Title 24 approved.

DXP4™ Series is the ideal specification grade downlighting for remodel or new construction projects. It delivers exceptional visual comfort and optical control, extraordinary mechanical precision, installation efficiency and future proofing. Designed for optimal life and lumen maintenance, DXP4™ Series is perfect balance of visual comfort and quality of light.

Dimensions (mm)



Power	Size	A	B	Cut out
10w	4"	126	104	110

Ordering information

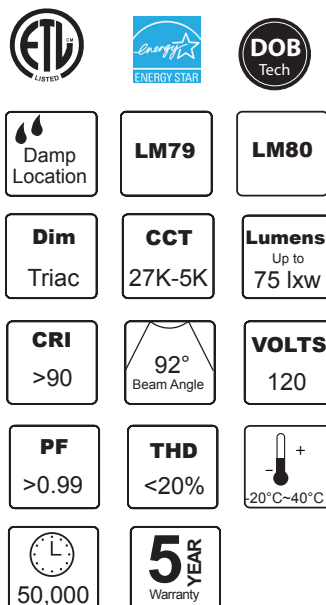
Item	Power	Size	CCT	Lumens
AL582516	10w	4"	2700K	600
AL582517	10w	4"	3000K	650
AL582518	10w	4"	4000K	700
AL582519	10w	4"	5000K	750

Packing information

Model	CBM (Master)	Pieces per master	Box Dimensions (CM)	Gross weight (KGS)
10w	0.0275	12	34.5 x 28 x 28.5	7

DXP4s™ Series

4"



The DXP4s™ Series is a Square 4" residential / commercial grade LED recessed downlight with cutting edge DOB led technology that eliminates the need for drivers, resulting in a more stable and powerful fixture, with stunning lifetime up to 50,000 hours, and power factor >90%.

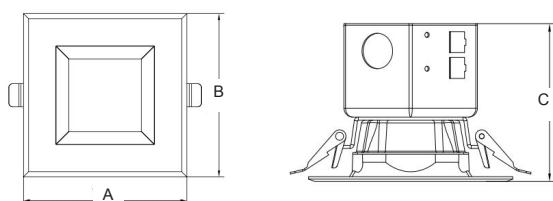
The DXP4s™ Series downlights feature a unique "canless" design. These all-in-one LED fixtures include an integrated junction box for direct wiring, require no tools and take less than 1/3 of the time to install versus a conventional fixture with can. Secure trim retention with two side-mounted spring clips for easy installation in plaster, sheet rock, or plywood ceilings.

The DXP4s™ Series computer designed baffle reflector, creates more uniform light with fewer downlights without worrying about glare or distractions. DXP4s™ Series optic system offers a comfortable, soothing light, achieving uncompromising illumination with a true 92° Beam and CRI>90. The optic chamber, made of heavy-duty PC ensures maximum heat dissipation.

DXP4s™ Series features 120v & TRIAC dimming, to add versatility and control. DOB technology, led power, and housing work together in harmony to create a thermal management system in a single compact unit. DXP4s™ Series are IC Rated and comply with National Electrical Code (NEC), ETL, Energy Star and Title 24 approved.

DXP4s™ Series is the ideal specification grade downlighting for remodel or new construction projects. It delivers exceptional visual comfort and optical control, extraordinary mechanical precision, installation efficiency and future proofing. Designed for optimal life and lumen maintenance, DXP4s™ Series is perfect balance of visual comfort and quality of light.

Dimensions (mm)



Power	Size	A	B	C	Cut out
10w	4"	127	127	98	110

Ordering information

Item	Power	Size	CCT	Lumens
AL582520	10w	4"	2700K	600
AL582521	10w	4"	3000K	650
AL582522	10w	4"	4000K	700
AL582523	10w	4"	5000K	750

Packing information

Model	CBM (Master)	Pieces per master	Box Dimensions (CM)	Gross weight (KGS)
10w	0.0312	12	36 x 30.5 x 28.5	7.5

DXP6™ Series

6"



LM79

LM80



CCT
27K-5K

Lumens
Up to
73 lxw



VOLTS
120



THD
<20%



5 YEAR
Warranty

The DXP6™ Series is a Round 4" residential / commercial grade LED recessed downlight with cutting edge DOB led technology that eliminates the need for drivers, resulting in a more stable and powerful fixture, with stunning lifetime up to 50,000 hours, and power factor >90%.

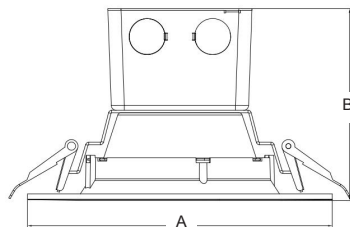
The DXP6™ Series downlights feature a unique "canless" design. These all-in-one LED fixtures include an integrated junction box for direct wiring, require no tools and take less than 1/3 of the time to install versus a conventional fixture with can. Secure trim retention with two side-mounted spring clips for easy installation in plaster, sheet rock, or plywood ceilings.

The DXP6™ Series computer designed baffle reflector, creates more uniform light with fewer downlights without worrying about glare or distractions. DXP6™ Series optic system offers a comfortable, soothing light, achieving uncompromising illumination with a true 102° Beam and CRI>90. The optic chamber, made of heavy-duty PC ensures maximum heat dissipation.

DXP6™ Series features 120v & TRIAC dimming, to add versatility and control. DOB technology, led power, and housing work together in harmony to create a thermal management system in a single compact unit. DXP6™ Series are IC Rated and comply with National Electrical Code (NEC), ETL, Energy Star and Title 24 approved.

DXP6™ Series is the ideal specification grade downlighting for remodel or new construction projects. It delivers exceptional visual comfort and optical control, extraordinary mechanical precision, installation efficiency and future proofing. Designed for optimal life and lumen maintenance, DXP6™ Series is perfect balance of visual comfort and quality of light.

Dimensions (mm)



Power	Size	A	B	Cut out
15w	10"	186	84	165

Ordering information

Item	Power	Size	CCT	Lumens
AL582524	15w	6"	2700K	950
AL582525	15w	6"	3000K	1000
AL582526	15w	6"	4000K	1050
AL582527	15w	6"	5000K	1100

Packing information

Model	CBM (Master)	Pieces per master	Box Dimensions (CM)	Gross weight (KGS)
15w	0.0462	12	41 x 27.5 x 41	8

DXP6s™ Series

6"



The DXP6s™ Series is a Square 6" residential / commercial grade LED recessed downlight with cutting edge DOB led technology that eliminates the need for drivers, resulting in a more stable and powerful fixture, with stunning lifetime up to 50,000 hours, and power factor >90%.

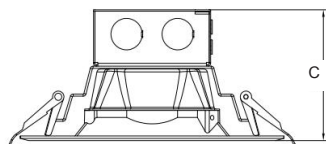
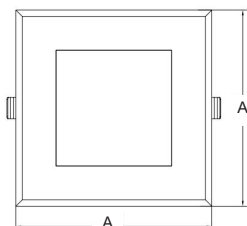
The DXP6s™ Series downlights feature a unique "canless" design. These all-in-one LED fixtures include an integrated junction box for direct wiring, require no tools and take less than 1/3 of the time to install versus a conventional fixture with can. Secure trim retention with two side-mounted spring clips for easy installation in plaster, sheet rock, or plywood ceilings.

The DXP6s™ Series computer designed baffle reflector, creates more uniform light with fewer downlights without worrying about glare or distractions. DXP6s™ Series optic system offers a comfortable, soothing light, achieving uncompromising illumination with a true 92° Beam and CRI>90. The optic chamber, made of heavy-duty PC ensures maximum heat dissipation.

DXP6s™ Series features 120v & TRIAC dimming, to add versatility and control. DOB technology, led power, and housing work together in harmony to create a thermal management system in a single compact unit. DXP6s™ Series are IC Rated and comply with National Electrical Code (NEC), ETL, Energy Star and Title 24 approved.

DXP6s™ Series is the ideal specification grade downlighting for remodel or new construction projects. It delivers exceptional visual comfort and optical control, extraordinary mechanical precision, installation efficiency and future proofing. Designed for optimal life and lumen maintenance, DXP6s™ Series is perfect balance of visual comfort and quality of light.

Dimensions (mm)



Power	Size	A	B	C	Cut out
15w	6"	186	186	92	165

Ordering information

Item	Power	Size	CCT	Lumens
AL582528	15w	6"	2700K	950
AL582529	15w	6"	3000K	1000
AL582530	15w	6"	4000K	1050
AL582531	15w	6"	5000K	1100

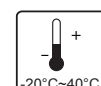
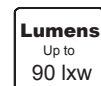
Packing information

Model	CBM (Master)	Pieces per master	Box Dimensions (CM)	Gross weight (KGS)
15w	0.0646	12	42 x 38 x 40.5	10

DLR5C™ Series

CCT Selectable

3"/4"/6"/8"/12"



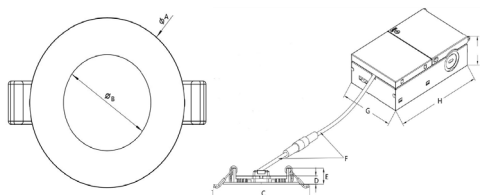
The DLR5C™ Series LED downlights with selectable CCT are ultra-thin recessed downlights ideal for shallow ceiling plenum applications. Quality, housing-free recessed downlighting is achieved with its narrow remote driver box. It features a switch for easy color temperature adjustment. The DLR5C™ Series fixtures are quick and simple to install from below the ceiling with as little as 3-inch plenum clearance.

Americanlite® innovative selectable 5-CCT feature incorporates a switch on each fixture for simple color temperature adjustment. Not 3.... but 5 different choices for every single application (2700-3000-3500-4000-5000K). Too warm or too cool? Simply toggle the integrated switch to your desired setting and you are done! Whatever your application, the DLR5C™ Series luminaires are sure to give you the feel and flexibility that you need. More flexibility? DLR5C Series™ fixtures are dimmable (Triac) 10-100%.

The DLR5C™ Series slim design allows for easy retrofit, remodel or new construction installation from below the ceiling as the perfect choice when you have joists or duct work in the way. They are wet location listed, making them ideal for use in a breadth of outdoor residential, hospitality, light commercial and multi-family applications.

The DLR5C™ Series is the ideal specification-grade architectural downlighting. It delivers exceptional visual comfort and optical control, extraordinary mechanical precision, installation efficiency and future proofing.

Dimensions (mm)



Power	Size	A	B	C	D	E	F	G	H	I
6w	3"	83	46.7	105	8.2	15.8	350	60	90	32
12w	4"	119	80	142	8.2	15.8	350	69	110	35
15w	6"	168	128.6	191.5	8.2	15.8	350	69	110	35
20w	8"	220	175	241.3	8.2	15.8	350	69	110	35
24w	12"	295	249	316.9	8.2	15.8	350	69	110	35

Ordering information

Item	Power	Size	2700K	3000K	3500K	4000K	5000K
AL582140	6w	3"	420 lm	450 lm	480 lm	458 lm	436 lm
AL582141	12w	4"	780 lm	960 lm	960 lm	902 lm	856 lm
AL582142	15w	6"	1100 lm	1200 lm	1275 lm	1205 lm	1175 lm
AL582143	20w	8"	1600 lm	1600 lm	1700 lm	1600 lm	1560 lm
AL582144	24w	12"	1950 lm	2080 lm	2160 lm	2090 lm	2035 lm

Notes

- Power and Lumen tolerance 10%
- *THD:
 - 3" 16.38%
 - 4" 14.21%
 - 6" 11.96%
 - 8" 28.56%
 - 12" 10.81%
- Working hours not to exceed more than 12hrs/day
- For indoor use only

Compatible Dimmers

Lutron		Leviton	
NT-1000	CTCL-153PDH-WH	6674	1F4205
S-603P	SLV-600P-WH	6633-P	1A2305
S-600P	DV-600P	6683	
CTCL-153P	CT-603PGH-WH	6672	
DVW-603PGH-WH	MIR-600THW-WH	IPL06	
4X603	MACL-153M-WH	VP106	
DVCL-163P-WH	S-600PR-WH	DB33K1	

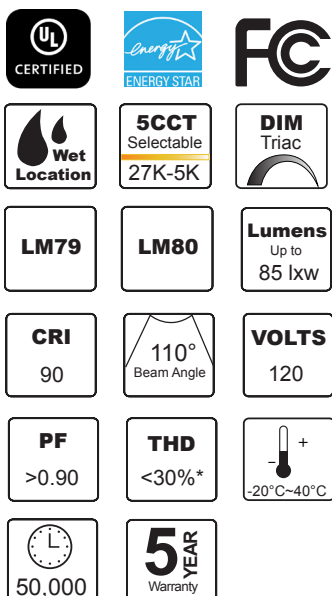
Packing information

Model	CBM (Master)	Pieces per master	Box Dimensions (CM)	Gross weight (KGS)
3"	0.0174	12	45.5 x 26.5 x 14.5	4.5
4"	0.0174	12	45.5 x 26.5 x 14.5	5
6"	0.0323	12	45.5 x 36.5 x 19.5	6
8"	0.0449	12	51.5 x 35.6 x 24.5	6.8
12"	0.0748	12	66.1 x 35.6 x 31.8	7.5

DLS5C™ Series

CCT Selectable

3"/4"/6"/8"/12"



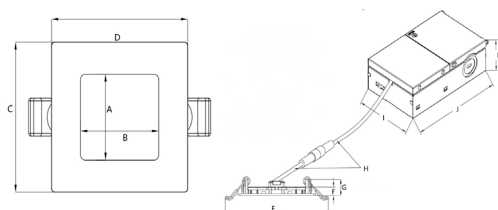
The DLS5C™ Series LED downlights with selectable CCT are ultra-thin recessed downlights ideal for shallow ceiling plenum applications. Quality, housing-free recessed downlighting is achieved with its narrow remote driver box. It features a switch for easy color temperature adjustment. The DLS5C™ Series fixtures are quick and simple to install from below the ceiling with as little as 3-inch plenum clearance.

Americanlite® innovative selectable 5-CCT feature incorporates a switch on each fixture for simple color temperature adjustment. Not 3.... but 5 different choices for every single application (2700-3000-3500-4000-5000K). Too warm or too cool? Simply toggle the integrated switch to your desired setting and you are done! Whatever your application, the DLS5C™ Series luminaires are sure to give you the feel and flexibility that you need. More flexibility? DLR5C Series™ fixtures are dimmable (Triac) 10-100%.

The DLS5C™ Series slim design allows for easy retrofit, remodel or new construction installation from below the ceiling as the perfect choice when you have joists or duct work in the way. They are wet location listed, making them ideal for use in a breadth of outdoor residential, hospitality, light commercial and multi-family applications.

The DLS5C™ Series is the ideal specification-grade architectural downlighting. It delivers exceptional visual comfort and optical control, extraordinary mechanical precision, installation efficiency and future proofing.

Dimensions (mm)



Power	Size	A	B	C	D	E	F	G	H	I	J	K
6w	3"	48	48	83	83	110.5	8.1	15.2	350	90	90	32
12w	4"	78	78	118	118	142	8.1	15.2	350	90	110	35
15w	6"	126	126	167	167	191.1	8.1	15.2	350	90	110	35
20w	8"	174	174	220	220	241.2	8.1	15.2	350	90	110	35
24w	12"	245	245	293.3	293.3	313	8.1	15.2	350	90	110	35

Ordering information

Item	Power	Size	2700K	3000K	3500K	4000K	5000K
AL582145	6w	3"	420 lm	430 lm	460 lm	438 lm	430 lm
AL582146	12w	4"	750 lm	840 lm	860 lm	830 lm	810 lm
AL582147	15w	6"	1050 lm	1125 lm	1235 lm	1135 lm	1095 lm
AL582148	20w	8"	1550 lm	1600 lm	1700 lm	1600 lm	1560 lm
AL582149	24w	12"	1900 lm	1940 lm	2040 lm	1990 lm	1970 lm

Notes

- Power and Lumen tolerance 10%
- *THD:
 - 3" 16.38%
 - 4" 14.21%
 - 6" 11.96%
 - 8" 28.56%
 - 12" 10.81%
- Working hours not to exceed more than 12hrs/day
- For indoor use only

Compatible Dimmers

Lutron		Leviton	
NT-1000	CTCL-153PDH-WH	6674	1F4205
S-603P	SLV-600P-WH	6633-P	1A2305
S-600P	DV-600P	6683	
CTCL-153P	CT-603PGH-WH	6672	
DVW-603PGH-WH	MIR-600THW-WH	IPL06	
4X603	MACL-153M-WH	VP106	
DVCL-163P-WH	S-600PR-WH	DB33K1	

Packing information

Model	CBM (Master)	Pieces per master	Box Dimensions (CM)	Gross weight (KGS)
3"	0.0174	12	45.5 x 26.5 x 14.5	4.5
4"	0.0174	12	45.5 x 26.5 x 14.5	5
6"	0.0323	12	45.5 x 36.5 x 19.5	6
8"	0.0449	12	51.5 x 35.6 x 24.5	6.8
12"	0.0748	12	66.1 x 35.6 x 31.8	7.5



DL5CX™ Series

CCT & Power Selectable Selectable

3"/4"/6"/8"/12"



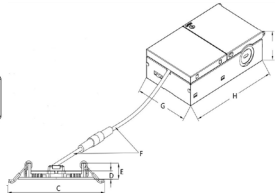
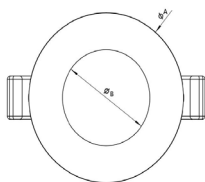
The DL5CX™ Series LED downlights with Power & CCT Selectable are ultra-thin recessed downlights ideal for shallow ceiling plenum applications. Quality, housing-free recessed downlighting is achieved with its narrow remote driver box. It features a switch for easy color temperature adjustment. The DL5CX™ Series fixtures are quick and simple to install from below the ceiling with as little as 3-inch plenum clearance.

Americanlite® innovative Power & CCT Selectable feature incorporates a switch on each fixture for simple power & color temperature adjustment. Not 3.... but 5 different CCT choices for every single application (2700-3000-3500-4000-5000K) and 3 different wattages. Too warm or too cool? too bright? Simply toggle the integrated switches to your desired setting and you are done! Whatever your application, the DL5CX™ Series luminaires are sure to give you the feel and flexibility that you need. More flexibility? DL5CX™ Series™ fixtures are dimmable 0-10V driver withing a 120-277v range.

The DL5CX™ Series slim design allows for easy retrofit, remodel or new construction installation from below the ceiling as the perfect choice when you have joists or duct work in the way. They are wet location listed, making them ideal for use in a breadth of outdoor residential, hospitality, light commercial and multi-family applications.

The DL5CX™ Series is the ideal specification-grade architectural downlighting. It delivers exceptional visual comfort and optical control, extraordinary mechanical precision, installation efficiency and future proofing.

Dimensions (mm)



Power	Size	A	B	C	D	E	F	G	H	I
6w	3"	83	46.7	105	8.2	15.8	350	60	90	32
12w	4"	119	80	142	8.2	15.8	350	69	110	35
15w	6"	168	128.6	191.5	8.2	15.8	350	69	110	35
20w	8"	220	175	241.3	8.2	15.8	350	69	110	35
24w	12"	295	249	316.9	8.2	15.8	350	69	110	35

Ordering information

Item	Power	Size	2700K	3000K	3500K	4000K	5000K
AL582790	8w	3"	560 lm	560 lm	560 lm	560 lm	560 lm
	6w		420 lm	420 lm	420 lm	420 lm	420 lm
	4w		280 lm	280 lm	280 lm	280 lm	280 lm
AL582791	12w	4"	960 lm	960 lm	960 lm	960 lm	960 lm
	8w		640 lm	640 lm	640 lm	640 lm	640 lm
	4w		320 lm	320 lm	320 lm	320 lm	320 lm
AL582792	15w	6"	1200 lm	1200 lm	1200 lm	1200 lm	1200 lm
	10w		800 lm	800 lm	800 lm	800 lm	800 lm
	5w		400 lm	400 lm	400 lm	400 lm	400 lm
AL582793	20w	8"	1600 lm	1600 lm	1600 lm	1600 lm	1600 lm
	14w		1120 lm	1120 lm	1120 lm	1120 lm	1120 lm
	10w		800 lm	800 lm	800 lm	800 lm	800 lm
AL582794	24w	12"	1920 lm	1920 lm	1920 lm	1920 lm	1920 lm
	16w		1280 lm	1280 lm	1280 lm	1280 lm	1280 lm
	8w		640 lm	640 lm	640 lm	640 lm	640 lm

Notes

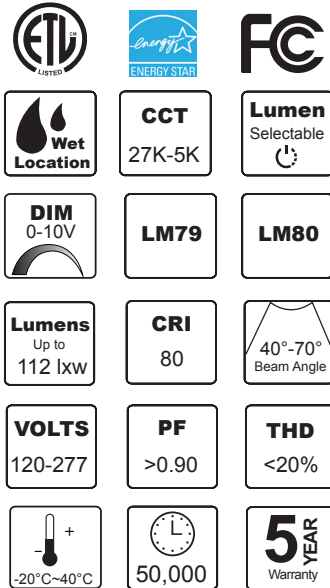
- Power and Lumen tolerance 10%
- AL582790= 70 lxw
- Working hours not to exceed more than 12hrs/day
- For indoor use only

Packing information

Model	CBM (Master)	Pieces per master	Box Dimensions (CM)	Gross weight (KGS)
3"	0.0174	12	45.5 x 26.5 x 14.5	4.5
4"	0.0174	12	45.5 x 26.5 x 14.5	5
6"	0.0323	12	45.5 x 36.5 x 19.5	6
8"	0.0449	12	51.5 x 35.6 x 24.5	6.8
12"	0.0748	12	66.1 x 35.6 x 31.8	7.5

DLX Max™ Series Lumen Selectable

3"/4"/6"/8"



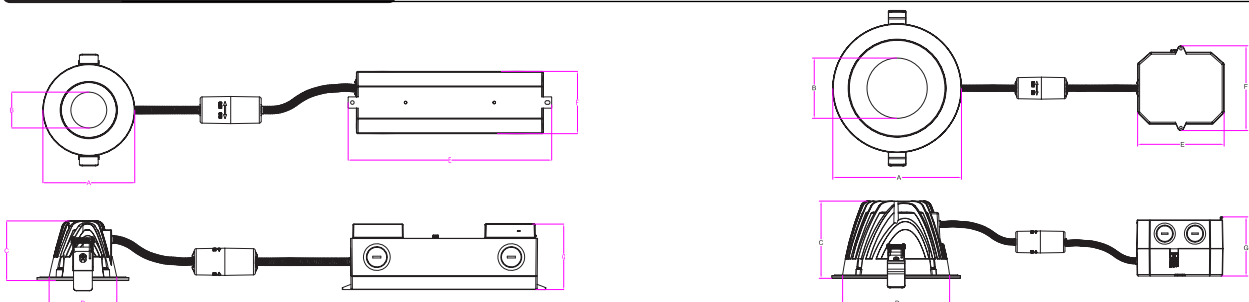
The DLX Max™ Series LED downlights with lumen selectable are Architectural Specification-Grade, recessed downlights ideal for professional applications. Quality, housing-free recessed downlighting is achieved with its narrow remote driver box. It features a switch for easy lumen adjustment. The DLX Max™ Series fixtures are quick and simple to install from below the ceiling.

Americanlite® innovative lumen selectable feature incorporates a switch on each fixture for simple lumen (power) adjustment; 3 different choices for every single application. Too bright or too dark? Simply toggle the integrated switch to your desired setting and you are done! Whatever your application, the DLX Max™ Series luminaires are sure to give you the feel and flexibility that you need. More flexibility? DLX Max™ Series fixtures are dimmable 0-100%.

All components in DLX Max™ Series are top of the line. Every detail has been taken care of for a premium performance. DLX Max™ luminaires offer a lower splay recesses optical system into the ceiling to prevent glare and provide a professional look. Rugged one-piece die-cast aluminum heat sink design for optimal thermal management. Wet location rated lens is tightly fitted to the housing to reduce the ingress of dust. White PC Reflector provides glare free illumination with excellent light control. A patented micro prism lens and a stunning CRI 90 will bring true colors, completing your project to a high-end profile.

The DLX Max™ Series is the ideal Architectural Specification-Grade downlighting. It delivers exceptional visual comfort and optical control, extraordinary mechanical precision, installation efficiency and future proofing.

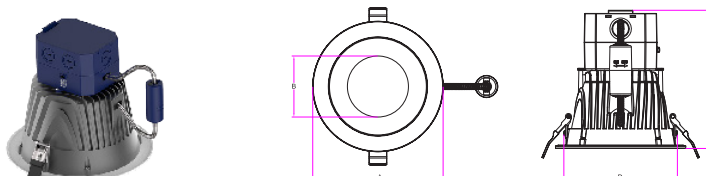
Dimensions (mm)



Power	Size	Cut Out						
		A	B	C	D	E	F	G
4w/5w/6w	3"	98	27	63.3	80	217	66.5	70
7w/9w/10.5w	4"	120	50	73	100	217	66.5	70

Power	Size	Cut Out						
		A	B	C	D	E	F	G
8w/10w/12w	6"	170	80	102	152	114	112	78
12w/14w/16w	6"	170	80	102	152	114	112	78
11w/16w/21w	8"	230	121	126	205	114	112	78
31w/41w/51w	8"	230	121	126	205	114	112	78

With box installed on top of downlight (6" and 8" only)



Size	A	B	C	D (Cut Out)
6"	170	80	180	152
8"	230	121	204	205

Ordering information

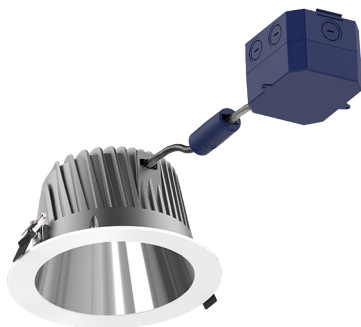
Item	Power	Size	CCT	Lumens	Battery Pack Options		
AL582462	4w/5w/6w	3"	2700K	400/510/570	E1	4w	AL585005
AL582463	4w/5w/6w	3"	3000K	400/510/570		8w	AL585008
AL582464	4w/5w/6w	3"	3500K	400/510/570			
AL582465	4w/5w/6w	3"	4000K	400/510/570			
AL582466	4w/5w/6w	3"	5000K	400/510/570			
AL582467	7w/9w/10.5w	4"	2700K	690/860/1030			
AL582468	7w/9w/10.5w	4"	3000K	690/860/1030			
AL582469	7w/9w/10.5w	4"	3500K	690/860/1030			
AL582470	7w/9w/10.5w	4"	4000K	690/860/1030			
AL582471	7w/9w/10.5w	4"	5000K	690/860/1030			
AL582472	8w/10w/12w	6"	2700K	800/1030/1260			
AL582473	8w/10w/12w	6"	3000K	800/1030/1260			
AL582474	8w/10w/12w	6"	3500K	800/1030/1260			
AL582475	8w/10w/12w	6"	4000K	800/1030/1260			
AL582476	8w/10w/12w	6"	5000K	800/1030/1260			
AL582477	12w/14w/16w	6"	3000K	1260/1500/1700			
AL582478	12w/14w/16w	6"	3500K	1260/1500/1700			
AL582479	12w/14w/16w	6"	4000K	1260/1500/1700			
AL582480	12w/14w/16w	6"	5000K	1260/1500/1700			
AL582481	11w/16w/21w	8"	3000K	1150/1720/2300			
AL582482	11w/16w/21w	8"	3500K	1150/1720/2300			
AL582483	11w/16w/21w	8"	4000K	1150/1720/2300			
AL582484	11w/16w/21w	8"	5000K	1150/1720/2300			
AL582485	31w/41w/51w	8"	3000K	3450/4600/5750			
AL582486	31w/41w/51w	8"	3500K	3450/4600/5750			
AL582487	31w/41w/51w	8"	4000K	3450/4600/5750			
AL582488	31w/41w/51w	8"	5000K	3450/4600/5750			

Note:

- 40° ± 10 Beam angle for 3"
- 60° ± 10 Beam angle for 4"
- 70° ± 10 Beam angle for 6" & 8"

Packing information

Model	CBM (Master)	Pieces per master	Box Dimensions (CM)	Gross weight (KGS)
3"	0.0180	4	17.5 x 43.6 x 23.6	2.41
4"	0.0231	4	19 x 46.6 x 26.2	2.68
6"	0.0272	4	21.3 x 35.8 x 35.8	4.20
8"	0.0523	4	23 x 47.7 x 47.7	6.60



DLX Max™ Series Lumen Selectable

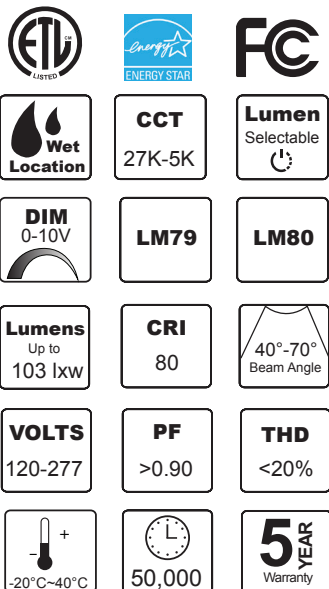
3"/4"/6"/8"

The DLX Max™ Series LED downlights with lumen selectable are Architectural Specification-Grade, recessed downlights ideal for Professional applications. Quality, housing-free recessed downlighting is achieved with its narrow remote driver box. It features a switch for easy lumen adjustment. The DLX Max™ Series fixtures are quick and simple to install from below the ceiling.

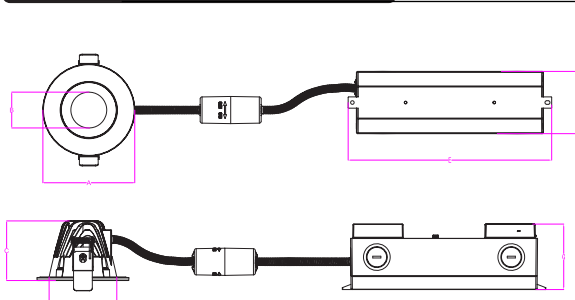
Americanlite® innovative lumen selectable feature incorporates a switch on each fixture for simple lumen (power) adjustment; 3 different choices for every single application. Too bright or too dark? Simply toggle the integrated switch to your desired setting and you are done! Whatever your application, the DLX Max™ Series luminaires are sure to give you the feel and flexibility that you need. More flexibility? DLX Max™ Series fixtures are dimmable 0-100%.

All components in DLX Max™ Series are top of the line, every detail has been taken care of for a premium performance. DLX Max™ luminaires offer a lower splay recesses optical system into the ceiling to prevent glare and provide a professional look. Rugged one-piece die-cast aluminum heat sink design for optimal thermal management. Wet location rated lens is tightly fitted to the housing to reduce the ingress of dust. Clear specular spun aluminum reflector provides glare free illumination with excellent light control. A patented micro prism lens and a stunning CRI 90 will bring true colors, completing your project to a high-end profile.

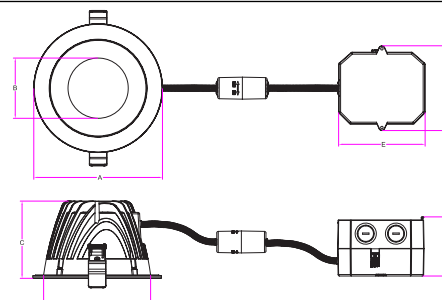
The DLX Max™ Series is the ideal Architectural Specification-Grade downlighting. It delivers exceptional visual comfort and optical control, extraordinary mechanical precision, installation efficiency and future proofing.



Dimensions (mm)

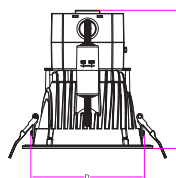
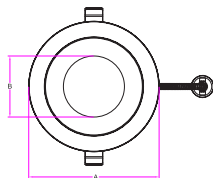


Power	Size	Cut Out						
		A	B	C	D	E	F	G
4w/5w/6w	3"	98	27	63.3	80	217	66.5	70
7w/9w/10.5w	4"	120	50	73	100	217	66.5	70



Power	Size	Cut Out						
		A	B	C	D	E	F	G
8w/10w/12w	6"	170	80	102	152	114	112	78
12w/14w/16w	6"	170	80	102	152	114	112	78
11w/16w/21w	8"	230	121	126	205	114	112	78
31w/41w/51w	8"	230	121	126	205	114	112	78

With box installed on top of downlight (6" and 8" only)



Size	A	B	C	D (Cut Out)
6"	170	80	180	152
8"	230	121	204	205

Ordering information

Item	Power	Size	CCT	Lumens	Battery Pack Options		
AL582489	5w/6w/7w	3"	2700K	360/470/520	E1 4w AL585005 E2 8w AL585008		
AL582490	5w/6w/7w	3"	3000K	360/470/520			
AL582491	5w/6w/7w	3"	3500K	360/470/520			
AL582492	5w/6w/7w	3"	4000K	360/470/520			
AL582493	5w/6w/7w	3"	5000K	360/470/520			
AL582494	7w/9w/10.5w	4"	2700K	630/790/940			
AL582495	7w/9w/10.5w	4"	3000K	630/790/940			
AL582496	7w/9w/10.5w	4"	3500K	630/790/940			
AL582497	7w/9w/10.5w	4"	4000K	630/790/940			
AL582498	7w/9w/10.5w	4"	5000K	630/790/940			
AL582499	8w/10w/12w	6"	2700K	730/940/1160			
AL582500	8w/10w/12w	6"	3000K	730/940/1160			
AL582501	8w/10w/12w	6"	3500K	730/940/1160			
AL582502	8w/10w/12w	6"	4000K	730/940/1160			
AL582503	8w/10w/12w	6"	5000K	730/940/1160			
AL582504	12w/14w/16w	6"	3000K	1160/1380/1560			
AL582505	12w/14w/16w	6"	3500K	1160/1380/1560			
AL582506	12w/14w/16w	6"	4000K	1160/1380/1560			
AL582507	12w/14w/16w	6"	5000K	1160/1380/1560			
AL582508	11w/16w/21w	8"	3000K	1050/1580/2110			
AL582509	11w/16w/21w	8"	3500K	1050/1580/2110			
AL582510	11w/16w/21w	8"	4000K	1050/1580/2110			
AL582511	11w/16w/21w	8"	5000K	1050/1580/2110			
AL582512	31w/41w/51w	8"	3000K	3170/4230/5290			
AL582513	31w/41w/51w	8"	3500K	3170/4230/5290			
AL582514	31w/41w/51w	8"	4000K	3170/4230/5290			
AL582515	31w/41w/51w	8"	5000K	3170/4230/5290			

Note:

- 40° ± 10 Beam angle for 3"
- 60° ± 10 Beam angle for 4"
- 70° ± 10 Beam angle for 6" & 8"

Packing information

Model	CBM (Master)	Pieces per master	Box Dimensions (CM)	Gross weight (KGS)
3"	0.0180	4	17.5 x 43.6 x 23.6	2.41
4"	0.0231	4	19 x 46.6 x 26.2	2.68
6"	0.0272	4	21.3 x 35.8 x 35.8	4.20
8"	0.0523	4	23 x 47.7 x 47.7	6.60

DLX Max™ Series Lumen & CCT Selectable

3"/4"/6"/8"



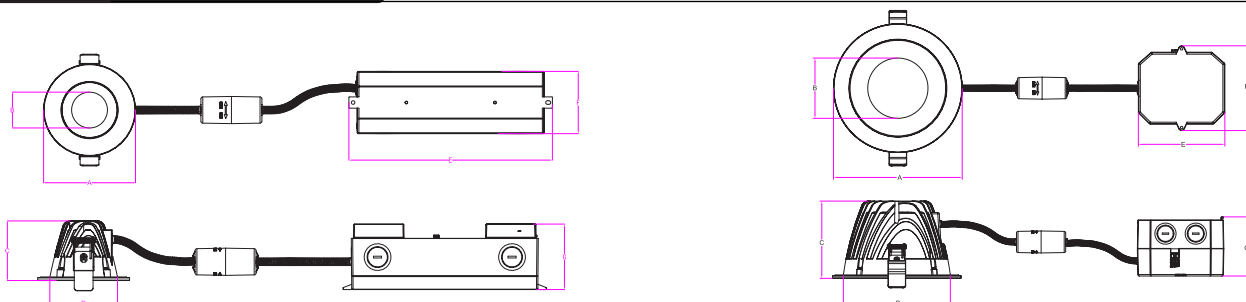
The DLX Max™ Series LED downlights with lumen selectable are Architectural Specification-Grade, recessed downlights ideal for professional applications. Quality, housing-free recessed downlighting is achieved with its narrow remote driver box. It features a switch for easy lumen adjustment. The DLX Max™ Series fixtures are quick and simple to install from below the ceiling.

Americanlite® innovative lumen and CCT selectable feature incorporates a switch on each fixture for simple lumen (power) & CCT adjustment; 3 different choices for every single application. Too bright or too dark? Simply toggle the integrated switch to your desired setting and you are done! Whatever your application, the DLX Max™ Series luminaires are sure to give you the feel and flexibility that you need. More flexibility? DLX Max™ Series fixtures are dimmable 0-100%.

All components in DLX Max™ Series are top of the line, every detail has been taken care of for a premium performance. DLX Max™ luminaires offer a lower splay recesses optical system into the ceiling to prevent glare and provide a professional look. Rugged one-piece die-cast aluminum heat sink design for optimal thermal management. Wet location rated lens is tightly fitted to the housing to reduce the ingress of dust. White PC Reflector reflector provides glare free illumination with excellent light control. A patented micro prism lens and a stunning CRI 80 will bring true colors, completing your project to a high-end profile.

The DLX Max™ downlighting. It delivers exceptional visual comfort and optical control, extraordinary mechanical precision, installation efficiency and future proofing.

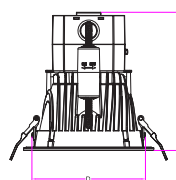
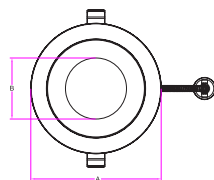
Dimensions (mm)



Power	Size	A	B	C	D	E	F	G
5.5w/7w/8.5w	3"	98	27	63.3	80	217	66.5	70
8.5w/10w/11w	4"	120	50	73	100	217	66.5	70

Power	Size	A	B	C	D	E	F	G
12w/18w/24w	6"	170	80	102	152	114	112	78
34w/46w/59w	8"	230	121	126	205	114	112	78

With box installed on top of downlight (6" and 8" only)



Size	A	B	C	D (Cut Out)
6"	170	80	180	152
8"	230	121	204	205

Ordering information

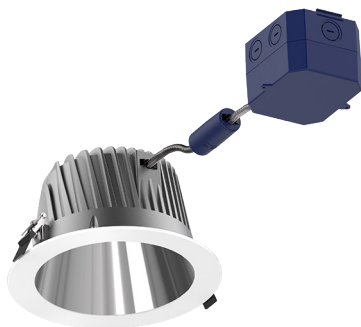
Item	Power	Size	CCT	Lumens	Battery Pack Options
AL582540	5.5w/7w/8.5w	3"	27K/3K/35K/4K/5K	480/630/740	E1 4w AL585005 E2 8w AL585008
AL582541	8.5w/10w/11w	4"	27K/3K/35K/4K/5K	740/850/960	
AL582542	12w/18w/24w	6"	3K/35K/4K/5K	1150/1700/2300	
AL582543	34w/46w/59w	8"	3K/35K/4K/5K	3400/4600/5700	

Note:

- 40° ± 10 Beam angle for 3"
- 60° ± 10 Beam angle for 4"
- 70° ± 10 Beam angle for 6" & 8"

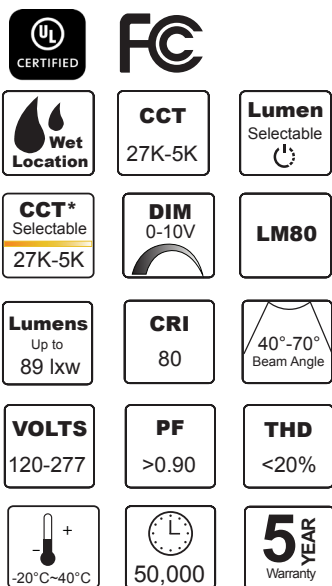
Packing information

Model	CBM (Master)	Pieces per master	Box Dimensions (CM)	Gross weight (KGS)
3"	0.0180	4	17.5 x 43.6 x 23.6	2.7
4"	0.0231	4	19 x 46.6 x 26.2	3.14
6"	0.0272	4	21.3 x 35.8 x 35.8	4.7
8"	0.0523	4	23 x 47.7 x 47.7	7.5



DLX Max™ Series Lumen & CCT Selectable

3"/4"/6"/8"



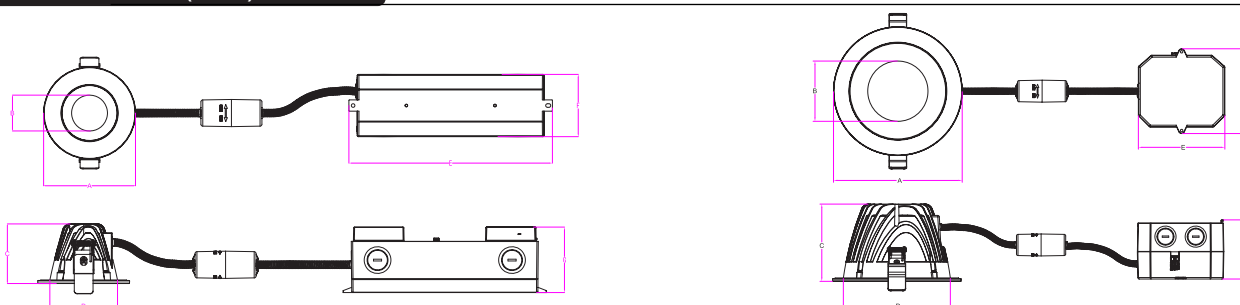
The DLX Max™ Series LED downlights with lumen selectable are Architectural Specification-Grade, recessed downlights ideal for professional applications. Quality, housing-free recessed downlighting is achieved with its narrow remote driver box. It features a switch for easy lumen adjustment. The DLX Max™ Series fixtures are quick and simple to install from below the ceiling.

Americanlite® innovative lumen and CCT selectable feature incorporates a switch on each fixture for simple lumen (power) & CCT adjustment; 3 different choices for every single application. Too bright or too dark? Simply toggle the integrated switch to your desired setting and you are done! Whatever your application, the DLX Max™ Series luminaires are sure to give you the feel and flexibility that you need. More flexibility? DLX Max™ Series fixtures are dimmable 0-100%.

All components in DLX Max™ Series are top of the line, every detail has been taken care of for a premium performance. DLX Max™ luminaires offer a lower splay recesses optical system into the ceiling to prevent glare and provide a professional look. Rugged one-piece die-cast aluminum heat sink design for optimal thermal management. Wet location rated lens is tightly fitted to the housing to reduce the ingress of dust. Clear specular spun aluminum reflector provides glare free illumination with excellent light control. A patented micro prism lens and a stunning CRI 80 will bring true colors, completing your project to a high-end profile.

The DLX Max™ downlighting. It delivers exceptional visual comfort and optical control, extraordinary mechanical precision, installation efficiency and future proofing.

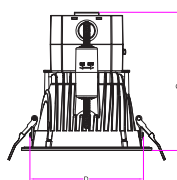
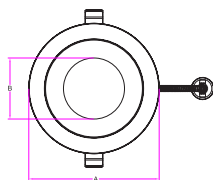
Dimensions (mm)



Power	Size	A	B	C	D	E	F	G
5.5w/7w/8.5w	3"	98	27	63.3	80	217	66.5	70
8.5w/10w/11w	4"	120	50	73	100	217	66.5	70

Power	Size	A	B	C	D	E	F	G
12w/18w/24w	6"	170	80	102	152	114	112	78
34w/46w/59w	8"	230	121	126	205	114	112	78

With box installed on top of downlight (6' and 8" only)



Size	A	B	C	D (Cut Out)
6"	170	80	180	152
8"	230	121	204	205

Ordering information

Item	Power	Size	CCT	Lumens	Battery Pack Options
AL582544	5.5w/7w/8.5w	3"	27K/3K/35K/4K/5K	440/570/690	E1 4w AL585005 E2 8w AL585008
AL582545	8.5w/10w/11w	4"	27K/3K/35K/4K/5K	690/790/880	
AL582546	12w/18w/24w	6"	3K/35K/4K/5K	1050/1580/2120	
AL582547	34w/46w/59w	8"	3K/35K/4K/5K	3150/4200/5280	

Note:

- 40° ± 10 Beam angle for 3"
- 60° ± 10 Beam angle for 4"
- 70° ± 10 Beam angle for 6" & 8"

Packing information

Model	CBM (Master)	Pieces per master	Box Dimensions (CM)	Gross weight (KGS)
3"	0.0180	4	17.5 x 43.6 x 23.6	2.7
4"	0.0231	4	19 x 46.6 x 26.2	3.14
6"	0.0272	4	21.3 x 35.8 x 35.8	4.7
8"	0.0523	4	23 x 47.7 x 47.7	7.5



DLX Pro™ Series

6"/8"



The DLX Pro™ Series is a commercial and architectural grade LED recessed downlight with cutting edge led technology that offers color consistency from fixture to fixture.

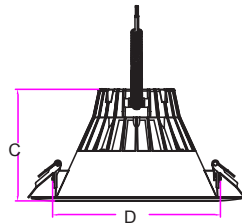
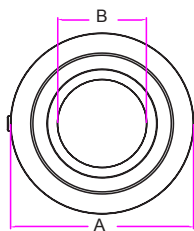
Computer designed reflector, creates more uniform light with fewer downlights without worrying about glare or distractions. DLX Pro™ Series optic system offers a comfortable, soothing light, achieving uncompromising illumination with a true 90° Beam. White color housing (silver for 12w).

The optic chamber, is a fully enclosed modular system, ensuring maximum heat dissipation. DLX Pro™ Series features an integrated led power supply and thermal management system combined in a single compact unit. UL Integrated driver 0-10v dimming, 100-277v.

DLX Pro™ Series is the ideal specification grade downlighting. It delivers exceptional visual comfort and optical control, extraordinary mechanical precision, installation efficiency and future proofing, with a life expectancy of 50,000 hours at 70% Lumen maintenance.

Designed for optimal life and lumen maintenance, DLX Pro™ Series is perfect balance of visual comfort and quality of light.

Dimensions (mm)



Power	Size	A	B	C	D (Cut out)
12w	6"	187	94	94	139
18w	6"	187	95	110	146
24w	8"	240	117	128	192
33w	8"	240	140	129	192

Ordering information

Item	Power	Size	CCT	Lumens
AL582163	12w	6"	3000K	1050
AL582164	12w	6"	3500K	1080
AL582165	12w	6"	4000K	1110
AL582166	12w	6"	5000K	1140

Item	Power	Size	CCT	Lumens
AL582167	18w	6"	3000K	1700
AL582168	18w	6"	3500K	1740
AL582169	18w	6"	4000K	1780
AL582170	18w	6"	5000K	1820

Item	Power	Size	CCT	Lumens
AL582171	24w	8"	3000K	2300
AL582172	24w	8"	3500K	2340
AL582173	24w	8"	4000K	2380
AL582174	24w	8"	5000K	2420

Item	Power	Size	CCT	Lumens
AL582175	33w	8"	3000K	3500
AL582176	33w	8"	3500K	3540
AL582177	33w	8"	4000K	3580
AL582178	33w	8"	5000K	3620

Battery Pack Options	
E3	20w AL585006 (for 12w, 18w)
E4	40w AL585027 (for 24w, 33w)

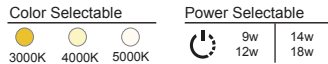
Packing information

Model	CBM (Master)	Pieces per master	Box Dimensions (CM)	Gross weight (KGS)
12w	0.0217	4	40.9 x 25.5 x 20.9	2.79
18w	0.0263	4	40.9 x 30.8 x 20.9	3.76
24w	0.0506	4	52 x 34.5 x 26.25	5.30
33w	0.0506	4	52 x 34.5 x 26.25	6.22



DLX Pro™ Series

CCT/Power Selectable
6"



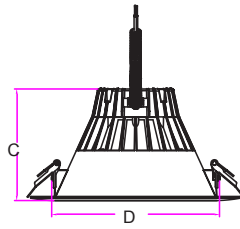
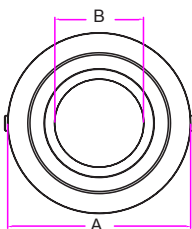
The DLX Pro™ Series LED downlights with selectable CCT are specification grade recessed downlights ideal for ceiling plenum applications. Quality, housing-free recessed downlighting is achieved with its fully enclosed modular system ensuring maximum heat dissipation. It features a switch for easy color temperature adjustment.

Americanlite® innovative Selectable 3-CCT feature incorporates a switch on each fixture for simple color temperature adjustment. Different choices for every single application. Too warm or too cool? Simply toggle the integrated switch to your desired setting and you are done! Whatever your application, The DLX Pro™ Series luminaires are sure to give you the feel and flexibility that you need. More flexibility? The DLX Pro™ fixtures are dimmable 0-10V and 120-277v.

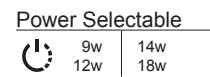
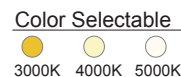
Computer designed reflector, creates more uniform light with fewer downlights without worrying about glare or distractions. DLX Pro™ Series optic system offers a comfortable, soothing light, achieving uncompromising illumination with a true 90° Beam. Silver color housing (white for 14w/18w).

The DLX Pro™ Series with selectable CCT are the ideal specification-grade architectural downlighting. They are wet location listed, making them ideal for use in a breadth of outdoor residential, commercial, hospitality and multifamily applications. It delivers exceptional visual comfort and optical control, extraordinary mechanical precision, installation efficiency and future proofing.

Dimensions (mm)



Power	Size	A	B	C	D (Cut out)
9w/12w	6"	187	94	97.5	139
14w/18w	6"	187	95	113	146



Ordering information

Item	Power	Size	3000K	4000K	5000K	Battery Pack Options
AL582179	9w	6"	700 lm	730 lm	760 lm	E3 20w AL585006
	12w	6"	900 lm	930 lm	960 lm	
AL582180	14w	6"	1200 lm	1230 lm	1260 lm	
	18w	6"	1500 lm	1540 lm	1580 lm	

Packing information

Model	CBM (Master)	Pieces per master	Box Dimensions (CM)	Gross weight (KGS)
9w/12w	0.0217	4	20.8 x 41.1 x 25.5	2.8
14w/18w	0.0262	4	20.8 x 41.1 x 30.7	3.6



DLC™ Pro Series

5 CCT & Power Selectable

4"/6"/8"/10"

Color Selectable	Power Selectable



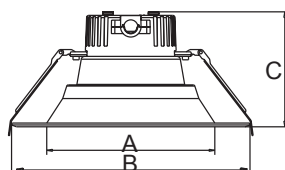
The DLC™ Pro Series LED downlights with selectable CCT & power are specification grade recessed downlights ideal for ceiling plenum applications. Quality, housing-free recessed downlighting is achieved with its fully enclosed modular system ensuring maximum heat dissipation. Secure trim retention with two side-mounted spring clips for easy installation.

Americanlite® innovative selectable 5-CCT feature incorporates a switch on each fixture for simple color temperature adjustment. Different choices for every single application. Too warm or too cool? Simply toggle the integrated switch to your desired setting and you are done! Whatever your application, The DLC™ Series is sure to give you the feel and flexibility that you need. More flexibility? The luminaires are power selectable, dimmable 0-10V and 100-277v. DLC™ Pro Series are IC Rated and comply with National Electrical Code (NEC), UL, Energy Star and Title 24 approved.

DLC™ Pro Series luminaires features a computer designed reflector, that creates more uniform light with fewer downlights without worrying about glare or distractions. DLC™ Pro Series optic system offers a comfortable, soothing light, achieving uncompromising illumination and CRI>90.

The DLC™ Pro Series with selectable CCT & power, are the ideal specification-grade architectural downlighting. They are wet location listed, making them ideal for use in a breadth of outdoor residential, commercial, hospitality and multifamily applications. It delivers exceptional visual comfort and optical control, extraordinary mechanical precision, installation efficiency and future proofing.

Dimensions (mm)



Power	Size	A	B	C
7w/10w/13w	4"	95	136	77
10w/15w/22w	6"	150	209	101
12w/20w/30w	8"	186	260	116
20w/30w/40w	10"	218	287	126

Ordering information

Item	Power	Size	2700K	3000K	3500K	4000K	5000K	Battery Pack Options
AL582561	7w	4"	590 lm	610 lm	630 lm	645 lm	650 lm	E4 40w AL585027
	10w	4"	850 lm	880 lm	910 lm	915 lm	930 lm	
	13w	4"	1020 lm	1045 lm	1055 lm	1060 lm	1060 lm	
	15w	4"	1200 lm	1220 lm	1250 lm	1265 lm	1285 lm	
AL582562	10w	6"	800 lm	825 lm	855 lm	870 lm	890 lm	Note: • Lumen and power 10% tolerance • Beam Angle: 4" =94.6° / 6" =93.5° 8" =94.1° / 10" =100.2°
	15w	6"	1200 lm	1220 lm	1250 lm	1265 lm	1285 lm	
	22w	6"	1850 lm	1880 lm	1910 lm	1940 lm	1970 lm	
	20w	6"	1700 lm	1730 lm	1760 lm	1790 lm	1820 lm	
AL582563	12w	8"	1000 lm	1030 lm	1060 lm	1090 lm	1120 lm	
	20w	8"	1700 lm	1730 lm	1760 lm	1790 lm	1820 lm	
	30w	8"	2400 lm	2430 lm	2460 lm	2490 lm	2520 lm	
	40w	8"	3000 lm	3030 lm	3060 lm	3090 lm	3120 lm	
AL582564	20w	10"	1700 lm	1730 lm	1760 lm	1790 lm	1820 lm	
	30w	10"	2300 lm	2330 lm	2360 lm	2390 lm	2420 lm	
	40w	10"	3000 lm	3030 lm	3060 lm	3090 lm	3120 lm	

Packing information

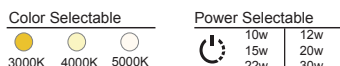
Model	CBM (Master)	Pieces per master	Box Dimensions (CM)	Gross weight (KGS)
4"	0.0405	12	37 x 60.2 x 18.2	5.8
6"	0.0354	6	48 x 35 x 26	5.2
8"	0.0564	6	56.5 x 36.5 x 30	6.5
10"	0.0629	4	60 x 32.5 x 33	4



DLC™ Series

3 CCT & Power Selectable

6"/8"



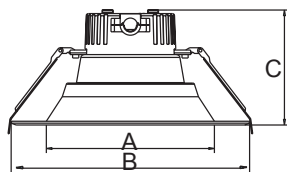
The DLC™ Series LED downlights with selectable CCT & power are specification grade recessed downlights ideal for ceiling plenum applications. Quality, housing-free recessed downlighting is achieved with its fully enclosed modular system ensuring maximum heat dissipation. Secure trim retention with two side-mounted spring clips for easy installation.

Americanlite® innovative selectable 3-CCT feature incorporates a switch on each fixture for simple color temperature adjustment. Different choices for every single application. Too warm or too cool? Simply toggle the integrated switch to your desired setting and you are done! Whatever your application, The DLC™ Series is sure to give you the feel and flexibility that you need. More flexibility? The luminaires are power selectable, dimmable 0-10V and 100-277v. DLC™ Series are IC Rated and comply with National Electrical Code (NEC), ETL, Energy Star and Title 24 approved.

DLC™ Series luminaires features a computer designed reflector, that creates more uniform light with fewer downlights without worrying about glare or distractions. DLC™ Series optic system offers a comfortable, soothing light, achieving uncompromising illumination and CRI>90.

The DLC™ Series with selectable CCT & power, are the ideal specification-grade architectural downlighting. They are wet location listed, making them ideal for use in a breadth of outdoor residential, commercial, hospitality and multifamily applications. It delivers exceptional visual comfort and optical control, extraordinary mechanical precision, installation efficiency and future proofing.

Dimensions (mm)



Power	Size	A	B	C
10w/15w/22w	6"	150	209	101
12w/20w/30w	8"	186	260	112

Ordering information

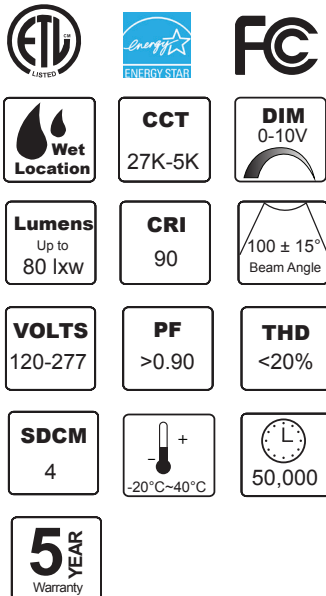
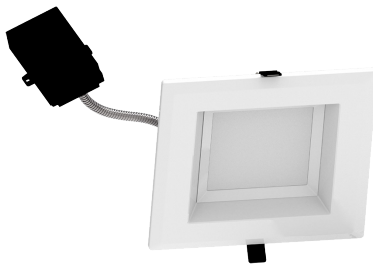
Item	Power	Size	3000K	4000K	5000K	Battery Pack Options
AL582440	10w	6"	800 lm	850 lm	900 lm	E4 40w AL585027
	15w	6"	1250 lm	1300 lm	1350 lm	
	22w	6"	1900 lm	1950 lm	2000 lm	
AL582441	12w	8"	900 lm	950 lm	1000 lm	Note: • Lumen and power 10% tolerance • Beam Angle: 6" =91.8° / 8" =93.4°
	20w	8"	1600 lm	1650 lm	1700 lm	
	30w	8"	2400 lm	2450 lm	2500 lm	

Packing information

Model	CBM (Master)	Pieces per master	Box Dimensions (CM)	Gross weight (KGS)
6"	0.0354	6	45 x 35 x 22.5	4
8"	0.0564	6	55 x 36.5 x 28.5	6

DLSQ Pro™ Series

8"



The DLSQ Pro™ Series is a commercial and architectural grade LED recessed downlight with cutting edge led technology that offers color consistency from fixture to fixture.

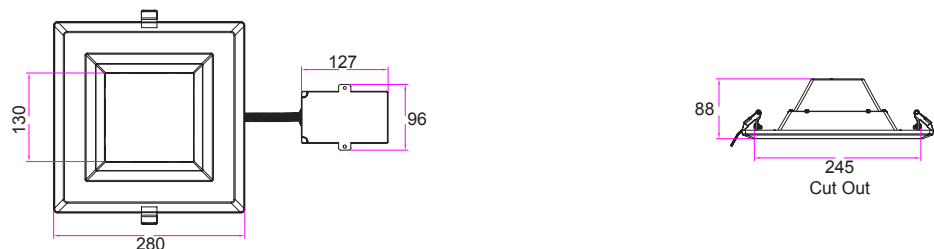
Computer designed reflector, creates more uniform light with fewer downlights without worrying about glare or distractions. DLSQ Pro™ Series optic system offers a comfortable, soothing light, achieving uncompromising illumination in a traditional square form.

The optic chamber, is a fully enclosed modular system, ensuring maximum heat dissipation. DLSQ Pro™ Series features an integrated led power supply and thermal management system combined in a single compact unit. UL Integrated driver 0-10v dimming, 120-277v.

DLSQ Pro™ Series is the ideal specification grade downlighting. It delivers exceptional visual comfort and optical control, extraordinary mechanical precision, installation efficiency and future proofing, with a life expectancy of 50,000 hours at 70% Lumen maintenance.

Designed for optimal life and lumen maintenance, DLSQ Pro™ Series is perfect balance of visual comfort and quality of light.

Dimensions (mm)



Ordering information

Item	Power	Size	CCT	Lumens	Item	Power	Size	CCT	Lumens	Battery Pack Options
AL582550	25w	8"	2700K	2000	AL582556	39w	8"	2700K	3000	E1 4w AL585005
AL582551	25w	8"	3000K	2000	AL582557	39w	8"	3000K	3000	
AL582552	25w	8"	3500K	2000	AL582558	39w	8"	3500K	3000	
AL582553	25w	8"	4000K	2000	AL582559	39w	8"	4000K	3000	
AL582554	25w	8"	5000K	2000	AL582560	39w	8"	5000K	3000	

NOTES:
Lumen and power 10% tolerance

Packing information

Model	CBM (Master)	Pieces per master	Box Dimensions (CM)	Gross weight (KGS)
25w 39w	0.0490	4	58.2 x 30.3 x 27.75	7



DXP8™ Series 8"

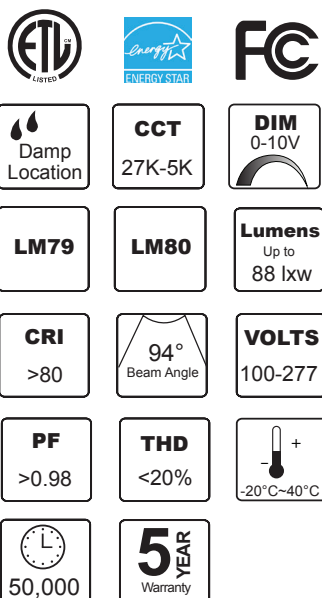
The DXP8™ Series is an 8" commercial grade LED recessed downlight with cutting edge led technology that offers color consistency from fixture to fixture.

The DXP8™ Series downlights feature a unique "canless" design. These all-in-one LED fixtures include an integrated junction box for direct wiring, require no tools and take less than 1/3 of the time to install versus a conventional fixture with can. Secure trim retention with two side-mounted spring clips for easy installation in plaster, sheet rock, or plywood ceilings.

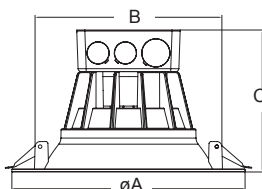
The DXP8™ Series computer designed baffle reflector, creates more uniform light with fewer downlights without worrying about glare or distractions. DXP8™ Series optic system offers a comfortable, soothing light, achieving uncompromising illumination with a true 94° beam and optional CRI>90. The optic chamber, made of extruded aluminum ensures maximum heat dissipation.

DXP8™ Series features an integrated UL driver 100-277v & 0-10v dimming, adding versatility and control. LED power, driver and housing work together in harmony to create a thermal management system in a single compact unit, with a life expectancy of 50,000 hours at 70% lumen maintenance. DXP8™ Series are IC Rated and comply with National Electrical Code (NEC), ETL, Energy Star and Title 24 approved.

DXP8™ Series is the ideal specification grade downlighting for remodel or new construction projects. It delivers exceptional visual comfort and optical control, extraordinary mechanical precision, installation efficiency and future proofing. Designed for optimal life and lumen maintenance, DXP8™ Series is perfect balance of visual comfort and quality of light.



Dimensions (mm)



Power	Size	A	B	C
25w/30w	8"	230	185	140

Ordering information

Item	Power	Size	CCT	Lumens	Options	Battery Pack Options
AL582420	25w	8"	2700K	1950	9 CRI >90 (Lumens 10% less)	E4 40w AL585027
AL582421	25w	8"	3000K	2000		
AL582422	25w	8"	4000K	2100		
AL582423	25w	8"	5000K	2200		
AL582424	30w	8"	2700K	2350		
AL582425	30w	8"	3000K	2350		
AL582426	30w	8"	4000K	2600		
AL582427	30w	8"	5000K	2600		

Packing information

Model	CBM (Master)	Pieces per master	Box Dimensions (CM)	Gross weight (KGS)
25w / 30w	0.0557	6	48 x 45.5 x 25.5	8

DXP10™ Series 10"



The DXP10™ Series is a 10" commercial grade LED recessed downlight with cutting edge DOB led technology that eliminates the need for drivers, resulting in a more stable and powerful fixture, with stunning lifetime up to 50,000 hours, and power factor >99%.

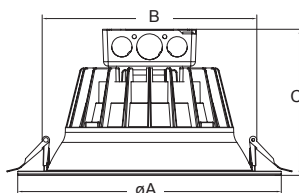
The DXP10™ Series downlights feature a unique "canless" design. These all-in-one LED fixtures include an integrated junction box for direct wiring, require no tools and take less than 1/3 of the time to install versus a conventional fixture with can. Secure trim retention with two side-mounted spring clips for easy installation in plaster, sheet rock, or plywood ceilings.

The DXP10™ Series computer designed baffle reflector, creates more uniform light with fewer downlights without worrying about glare or distractions. DXP10™ Series optic system offers a comfortable, soothing light, achieving uncompromising illumination with a true 98° Beam and CRI>90 (optional). The optic chamber, made of extruded aluminum ensures maximum heat dissipation.

DXP10™ Series features 100-277v & 0-10v dimming, to add versatility and control. DOB technology, led power, and housing work together in harmony to create a thermal management system in a single compact unit. DXP10™ Series are IC Rated and comply with National Electrical Code (NEC), ETL, Energy Star and Title 24 approved.

DXP10™ Series is the ideal specification grade downlighting for remodel or new construction projects. It delivers exceptional visual comfort and optical control, extraordinary mechanical precision, installation efficiency and future proofing. Designed for optimal life and lumen maintenance, DXP10™ Series is perfect balance of visual comfort and quality of light.

Dimensions (mm)



Power	Size	A	B	C
30w/30w/50w	10"	286	233	159

Ordering information

Item	Power	Size	CCT	Lumens	Item	Power	Size	CCT	Lumens
AL582428	30w	10"	2700K	2600	AL582436	50w	10"	2700K	4000
AL582429	30w	10"	3000K	2700	AL582437	50w	10"	3000K	4300
AL582430	30w	10"	4000K	2800	AL582438	50w	10"	4000K	4300
AL582431	30w	10"	5000K	2800	AL582439	50w	10"	5000K	4500
Item	Power	Size	CCT	Lumens					
AL582432	40w	10"	2700K	3300					
AL582433	40w	10"	3000K	3300					
AL582434	40w	10"	4000K	3700					
AL582435	40w	10"	5000K	3700					

Packing information

Model	CBM (Master)	Pieces per master	Box Dimensions (CM)	Gross weight (KGS)
30w / 40w / 50w	0.0703	4	62 x 31 x 36	8



Disk™ Series

CCT Selectable

4"/6"/8"/11"



Americanlite® Disk™ Series incorporate DOB™ technology to create an ultra-low profile, surface-mounting LED luminaire with the performance and look of traditional downlights. Disk™ Series is designed for installation in many square, octagon and round junction boxes. Suitable for residential or commercial installations.

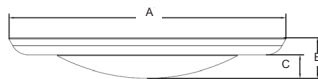
Americanlite® innovative selectable 5-CCT feature incorporates a switch on each fixture for simple color temperature adjustment. Not 3...but 5 different choices for every single application (2700-3000-3500-4000-6000K) and an impressive CRI 80. Too warm or too cool? Simply toggle the integrated switch to your desired setting and you are done! Whatever your application, the Disk™ luminaire is sure to give you the feel and flexibility that you need. More flexibility? Disk™ is dimmable (Triac) 10-100%.

Disk™ luminaire housing and frame are made of stamped steel; white finish standard (paintable), other colors available. Precision engineered optic provides uniform luminance from a low-profile convex lens.

Disk™ luminaire L70 at 60,000 hours projected in accordance with TM-21. EMI/RFI emissions per FCC 47CFR Part 15B. Disk™ luminaire contains no mercury or lead and RoHS compliant. Photometric testing in accordance with IES LM-79-08.

The Americanlite® Disk™ Series offers unparalleled design freedom with mainstream value. Perfect for residential or commercial installations and ideal for general lighting, schools, hotels, storage areas, corridors, basements, kitchen, and many more.

Dimensions (mm)



Model	Ø	A	B	C
4"	97	150	22	12
6"	132	186	24	12
8"	182	240	34	12
11"	206	277	34	12

Ordering information

Item	Power	Size	2700K	3000K	3500K	4000K	5000K	Ring	
AL582566	10w	4"	715 lm	740 lm	753 lm	753 lm	740 lm	Blank	White
AL582567	15w	6"	1265 lm	1320 lm	1370 lm	1340 lm	1300 lm	SN	Satin Nickel
AL582568	20w	8"	1700 lm	1770 lm	1815 lm	1785 lm	1760 lm	DB	Dark Brown
AL582569	30w	11"	2475 lm	2520 lm	2555 lm	2585 lm	2640 lm	BK	Black

Compatible dimmers

Lutron	NT-1000	S-603P	S-600P	DVCL-153P-WH	CTCL-153PDH-WH	SLV-600P-WH	DV-600P
	CT-03PGH-WH	MIR-600THW-WH	MACL-153M-WH	S-600PR-WH	DVLV-603P-IV	DVW-603GH-IWH	DVFSQ-LFH
	SCL-153PR-WH	CT-600PR-WH	CT103PR-WH	DVWCL-153PH-LA	CTCL-150H-WH	CTCL-153PR-WH	STCL-153PH-WH
Leviton	6672	6633-P	6672	6631	IPL06	1E1205	DB33K1
	1F4205	1A2305	DSL06-1TW				

Notes

- Switch ON/OFF = 50,000 times

Packing information

Model	CBM (Master)	Pieces per master	Box Dimensions (CM)	Gross weight (KGS)
4"	0.0179	12	32.5 x 31.5 x 17.5	3
6"	0.0186	12	39.5 x 22.5 x 21	4
8"	0.0657	12	50 x 26.3 x 50	6
11"	0.0634	12	62 x 32 x 32	6



Disk™ Series

4"/5"/6"/8"



LM80

LM79



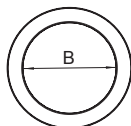
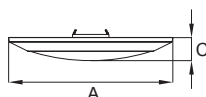
Americanlite® Disk™ Series incorporate DOB™ technology to create an ultra-low profile, surface-mounting LED luminaire with the performance and look of traditional downlights. Disk™ Series is designed for installation in many 2.75 inch, 3.5 inch and 4 inch square, octagon and round junction boxes. Suitable for residential or commercial installations.

Disk™ luminaire housing and frame are made of stamped steel; white finish standard (paintable), other colors available. Precision engineered optic provides uniform luminance from a low-profile convex lens. Disk™ Series with Triac dimming capacity, 100% to 10%. Color temperature options include: 2700K, 3000K, 3500K, 4000K and 5000K options. 90 CRI is standard.

Disk™ luminaire L70 at 50,000 hours projected in accordance with TM-21. EMI/RFI emissions per FCC 47CFR Part 15B. Disk™ luminaire contains no mercury or lead and RoHS compliant. Photometric testing in accordance with IES LM-79-08.

The Americanlite® Disk™ Series offers unparalleled design freedom with mainstream value. Perfect for residential or commercial installations and ideal for general lighting, schools, hotels, storage areas, corridors, basements, kitchen, and many more.

Dimensions (mm)



Power	Size	A	B	C
10w	4"	126	97	16
10w/15w	5"/6"	185	132	22
30w	8"	240	179	34

Compatible dimmers

Lutron	DVCL-153P-WH	CTCL-153PDH-WH	SLV-600P-WH	S-600PR-WH	DV-600P	CT-603PGH-WH	MIR-600THW-WH
	MACL-153M-WH	S-600PR-WH	DVLV-603P-IV	DVW-603PGH-WH	DVFSQ-LFH	SCL-153PR-WH	CT-600PR-WH
	CT-103PR-WH	DVWCL-153PH-LA	CTCL-150H-WH	CTCL-153PR-WH	STCL-153PH-WH	NT-1000	S-603P
Leviton	6674	6633-P	6672	DSL06-1TW	6631	IPL06	IPV0R
	1A2305	AE1205	DB33K1	1F4206			

Ordering information

Item	Power	Size	CCT	Lumens
AL582400	10w	4"	2700K	650
AL582401	10w	4"	3000K	670
AL582402	10w	4"	4000K	685
AL582403	10w	4"	5000K	750
AL582404	10w	5"/6"	2700K	750
AL582405	10w	5"/6"	3000K	780
AL582406	10w	5"/6"	4000K	830
AL582407	10w	5"/6"	5000K	850
AL582408	15w	5"/6"	2700K	1050
AL582409	15w	5"/6"	3000K	1100
AL582410	15w	5"/6"	4000K	1150
AL582411	15w	5"/6"	5000K	1200

Item	Power	Size	CCT	Lumens
AL582412	20w	8"	2700K	1450
AL582413	20w	8"	3000K	1500
AL582414	20w	8"	4000K	1550
AL582415	20w	8"	5000K	1600
AL582416	30w	8"	2700K	2200
AL582417	30w	8"	3000K	2250
AL582418	30w	8"	4000K	2300
AL582419	30w	8"	5000K	2350

Options

RK E26 base & spare parts for retrofit application / existing

Housing

Blank White
SN Satin Nickel
DB Dark Brown
BK Black

Notes

• 10w 5/6" = NO ETL

• Beam Angle:

4" = 100°

5/6" = 100°

8" = 110°

• THD:

10w = 11%

10w = 15% (5"/6")

15w = 17%

20w = 8.4%

30w = 8.3%

• UGR:

10w = 25

15w = 22

20w = 22.2

30w = 22.7

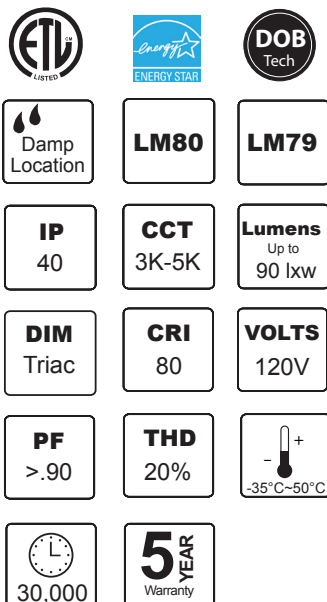
Packing information

Model	CBM (Master)	Pieces per master	Box Dimensions (CM)	Gross weight (KGS)
10w 4"	0.0057	12	28.5 x 15 x 13.5	3
10w / 15w 5"/6"	0.0265	12	39.5 x 32 x 21	5
20w / 30w 8"	0.0445	12	51.5 x 32 x 27	8



Puck™ Series

4"/6"/8"/10"

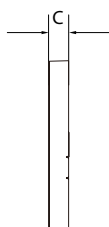
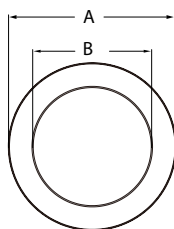


Americanlite® Puck™ Series are surface mounted LED fixtures with an unobtrusive (less than 1" deep) profile that cleanly integrates and compliments any décor.

Americanlite® Puck™ Series offers a sleek ultra-low profile in multiple sizes from 4" to 10". Provides economical installation by mounting directly over standard and fire-rated junction boxes. Puck™ luminaire ring is PC material, back plate: steel, and diffuser: PS. Precision engineered optic provides uniform luminance from an engineered flat lens. DOB driver with Triac dimming capacity, 100% to 10%. Color temperature options include: 3000K, 4000K and 5000K (ANSI C78.377- 2015 guidelines). Complies with Energy Star's requirements for color stability. Puck™ luminaire does not contain mercury or lead and is RoHS compliant. Photometric testing in accordance with IES LM-79-08. Lifespan: 30,000-hour LED lifespan based on IES LM-80 results and TM-21 calculations.

Americanlite® Puck™ Series provides general illumination in residential and commercial applications including multi-family and hospitality. Ideal for use in corridors, living spaces, closets, hallways, pantries, stairways, outdoor covered areas and much more.

Dimensions (mm)



Power	Size	A	B	C
6w	4"	135	115	16.3
12w	6"	180	160	16.3
18w	8"	225	205	16.3
24w	10"	300	180	16.3

Ordering information

Item	Power	Size	CCT	Lumens
AL582181	6w	4"	3000K	360
AL582182	6w	4"	4000K	370
AL582183	6w	4"	5000K	380
AL582184	12w	6"	3000K	910
AL582185	12w	6"	4000K	940
AL582186	12w	6"	5000K	970
AL582187	18w	8"	3000K	1500
AL582188	18w	8"	4000K	1550
AL582189	18w	8"	5000K	1600
AL582190	24w	10"	3000K	2020
AL582191	24w	10"	4000K	2060
AL582192	24w	10"	5000K	2160

Packing information

Model	CBM (Master)	Pieces per master	Box Dimensions (CM)	Gross weight (KGS)
6w 4"	0.0269	60	30.5 x 29.5 x 30	18
12w 6"	0.0315	40	38.5 x 21 x 39	19.5
18w 8"	0.0239	20	47.5 x 21 x 24	13.5
24w 10"	0.0215	10	32 x 21 x 32	12



Warranty

Americanlite® is pleased to provide a 5 year limited warranty covering the LED fixtures in this catalogue. Americanlite® warrants that the LED fixtures comply with Americanlite®'s published specifications and are free from defects in materials and workmanship.

All our equipment is CE, TUV, FCC or UL approved and manufactured with approved components. Americanlite® reserves the right to change or improve the design or components of any of its products due to parts availability or changes in standards, without assuming any obligation to modify any product previously manufactured and without notice. All equipment is tested and inspected before shipment.

This warranty is void if the product is operated outside of its normal operating conditions. The foregoing warranty does not apply to failures caused by acts of God or as a result of any abuse, misuse, abnormal use, or use in violation of any applicable standard, code or instructions for use in installations, including, but not limited to, those contained in the Standards for the International Electrotechnical Commission. Americanlite® reserves and has the right to examine failed lamp to determine the cause of failure, excessive lumen depreciation and patterns of usage.