



Extension Cords

americanlite®

We light your world™



Extension Cords Extensiones Eléctricas

Household Domésticas

3 outlet indoor cords allow use of up to three items in one small place. This provides flexibility, while allowing multiple devices to be use without the need of several cords. This household cord is durable and flexible.

Extensión de interiores con 3 tomas de corriente permite usar hasta 3 aparatos en un área pequeña. Esto da flexibilidad y permite usar varios aparatos eléctricos sin necesidad de usar diferentes extensiones. Esta extensión para uso doméstico es durable y flexible.

Cable	SPT
Gauge	16AWG
Conductor	2C
Current	13A
Power	1625W



Length (ft)	Master Qty. (pieces)	Master Wt. (kg)	Master Vol. (m³)
-------------	----------------------	-----------------	------------------

Brown

AL602001	6	50	6.5	0.0150
AL602002	9	50	8.5	0.0165
AL602003	12	50	10.0	0.0220
AL602004	15	40	11.5	0.0240
AL602005	20	40	13.5	0.0380

White

AL602006	6	50	6.5	0.0150
AL602007	9	50	8.5	0.0165
AL602008	12	50	10.0	0.0220
AL602009	15	40	11.5	0.0240
AL602010	20	40	13.5	0.0380

Green

AL602011	6	50	6.5	0.0150
AL602012	9	50	8.5	0.0165
AL602013	12	50	10.0	0.0220
AL602014	15	40	11.5	0.0240
AL602015	20	40	13.5	0.0380

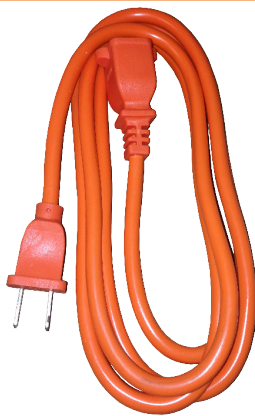
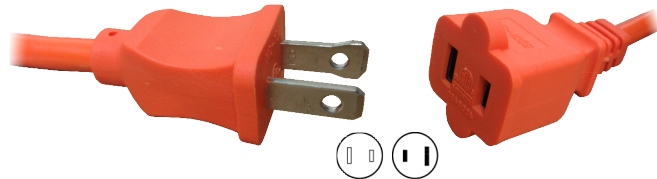
Extension Cords Extensiones Eléctricas

Outdoor Exteriores

Single outlet outdoor cords made with SJT/SJTW hard service cables for general use at 300V. This outdoor extension is durable and flexible.

Extensión de exteriores con una toma. Hecha con cables SJT/SJTW para servicio de uso general hasta 300V. Esta extensión para uso en exteriores es durable y flexible.

Cable	SJT/SJTW
Gauge	16AWG
Conductor	2C
Current	13A
Power	1625W

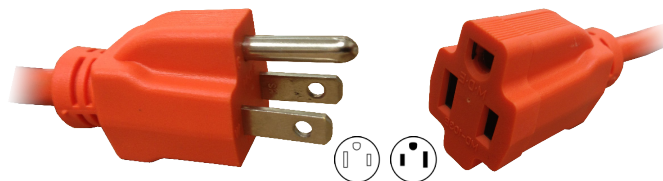


		Length (ft)	Master Qty. (pieces)	Master Wt. (kg)	Master Vol. (m ³)
AL602101	SJT	25	12	8.0	0.0160
AL602102	SJT	50	4	5.5	0.0100
AL602103	SJTW	100	4	10.5	0.0140

Single grounded outlet outdoor cords made with SJTW hard service cables for general use at 300V. Rated at -4°F to 140°F, thermoplastic jacket. This outdoor extension is made for medium duty. Available with UL certification.

Extensión de exteriores con una toma aterrizada. Hecha con cables SJTW para servicio de uso general hasta 300V. Clasificado de -20°C a 60°C, con cubierta termoplástica. Esta extensión de uso medio para exteriores. Disponible con certificación UL.

Cable	SJTW
Gauge	16AWG
Conductor	3C
Current	13A
Power	1625W



		Length (ft)	Master Qty. (pieces)	Master Wt. (kg)	Master Vol. (m ³)
AL602104		15	24	13.0	0.0260
AL602105		25	15	13.5	0.0300
AL602106		50	8	13.5	0.0240
AL602107		100	4	13.5	0.0230

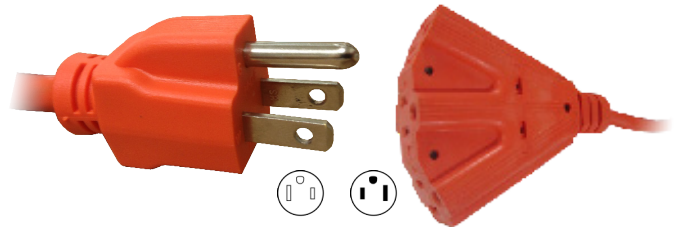
Extension Cords Extensiones Eléctricas

Outdoor Exteriores

Triple grounded outlet outdoor cords made with SJTW hard service cables for general use at 300V. Rated at -4°F to 140°F, thermoplastic jacket. This outdoor extension is made for medium duty.

Extensión de exteriores con tres toma. Hecha con cables SJTW para servicio de uso general hasta 300V. Clasificado de -20°C a 60°C, con cubierta termoplástica. Esta extensión de uso medio para exteriores.

Cable	SJTW
Gauge	16AWG
Conductor	3C
Current	13A
Power	1625W



Length (ft)	Master Qty. (pieces)	Master Wt. (kg)	Master Vol. (m ³)
-------------	----------------------	-----------------	-------------------------------

Parabolic type

AL602204	25	24	25.5	0.0260
AL602205	50	12	23.5	0.0240
AL602206	100	6	22.0	0.0230



Length (ft)	Master Qty. (pieces)	Master Wt. (kg)	Master Vol. (m ³)
-------------	----------------------	-----------------	-------------------------------

Bar type

AL602201	25	24	26.0	0.0300
AL602202	50	12	24.0	0.0240
AL602203	100	6	23.0	0.0230

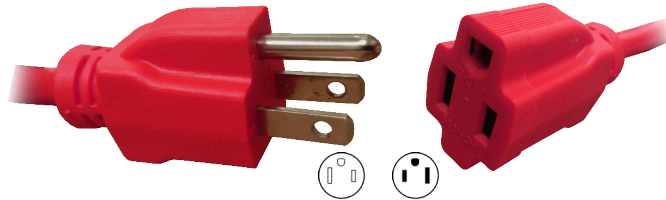
Extension Cords Extensiones Eléctricas

Heavy Duty Outdoor Exteriores Uso Rudo

Single grounded outlet outdoor cords made with SJTW hard service cables for general use at 300V. Rated at -4°F to 140°F, thermoplastic jacket. This outdoor extension is made for heavy duty.

Extensión de exteriores con con una toma. Hecha con cables SJTW para servicio de uso general hasta 300V. Clasificado de -20°C a 60°C, con cubierta termoplástica. Esta extensión de uso rudo para exteriores.

Cable	SJTW
Gauge	14AWG
Conductor	3C
Current	15A
Power	1875W

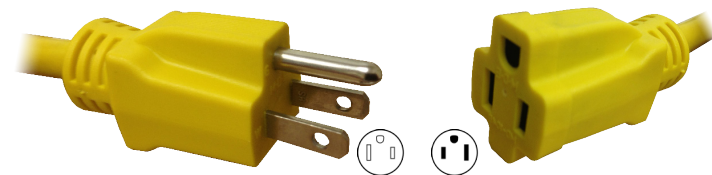


	Length (ft)	Master Qty. (pieces)	Master Wt. (kg)	Master Vol. (m ³)
AL602108	25	12	13.5	0.0260
AL602109	50	8	17.5	0.0260
AL602110	100	3	16.0	0.0170

Single grounded outlet outdoor cords made with SJTW hard service cables for general use at 300V. Rated at -4°F to 140°F, thermoplastic jacket. This outdoor extension is made for heavy duty.

Extensión de exteriores con con una toma. Hecha con cables SJTW para servicio de uso general hasta 300V. Clasificado de -20°C a 60°C, con cubierta termoplástica. Esta extensión de uso rudo para exteriores.

Cable	SJTW
Gauge	12AWG
Conductor	3C
Current	20A
Power	2500W



	Length (ft)	Master Qty. (pieces)	Master Wt. (kg)	Master Vol. (m ³)
AL602111	25	12	18.0	0.0260
AL602112	50	4	12.0	0.0190

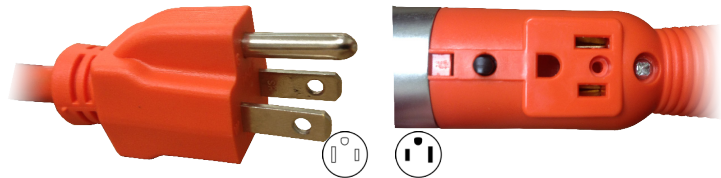
Extension Cords Extensiones Eléctricas

Work Lamps Lámparas de Taller

Working lamp ideal to light a working area located away from a fix electric output. Made with SJT hard service cables for general use at 300V. Rated -4°F to +140°F, thermoplastic jacket. Available with lastic or metal cage.

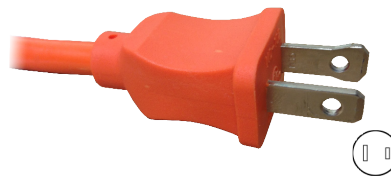
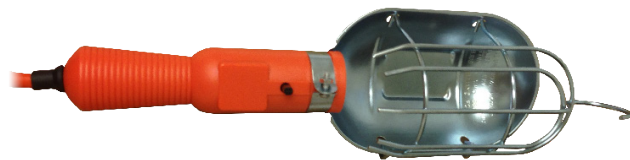
Lámpara de taller ideal para alumbrar área de trabajo alejada de una toma de corriente. Hecha con cables SJT para servicio de uso general hasta 300V. Clasificado de -20°C a 60°C, con cubieta termoplástica. Disponible con canastilla plástica o canastilla de metal.

Cable	SJT
Gauge	16AWG
Conductor	3C
Current	13A
Power	1625W



	Length (ft)	Master Qty. (pieces)	Master Wt. (kg)	Master Vol. (m³)
AL602301	12	12	10.0	0.0420
AL602302	25	6	15.0	0.0420
AL602303	50	3	20.0	0.0420

Cable	SJT
Gauge	16AWG
Conductor	2C
Current	13A
Power	1625W



	Length (ft)	Master Qty. (pieces)	Master Wt. (kg)	Master Vol. (m³)
AL602304	12	12	9.0	0.0420
AL602305	25	6	13.0	0.0420
AL602306	50	3	18.0	0.0420





Warranty

Americanlite® is pleased to provide a 1 year limited warranty covering the extension cords in this catalogue. Americanlite® warrants that the extensions cords comply with Americanlite®'s published specifications and are free from defects in materials and workmanship.

All our extension cords are manufactured with approved components. Americanlite® reserves the right to change or improve the design or components of any of its products due to parts availability or changes in standards, without assuming any obligation to modify any product previously manufactured and without notice. All wiring devices are tested and inspected before shipment.

This warranty is void if the product is operated outside of its normal operating conditions. The foregoing warranty does not apply to failures caused by acts of God or as a result of any abuse, misuse, abnormal use, or use in violation of any applicable standard, code or instructions for use in installations, including, but not limited to, those contained in the Standards for the International Electrotechnical Commission. Americanlite® reserves and has the right to examine failed fixtures to determine the cause of failure, excessive lumen depreciation and patterns of usage.